

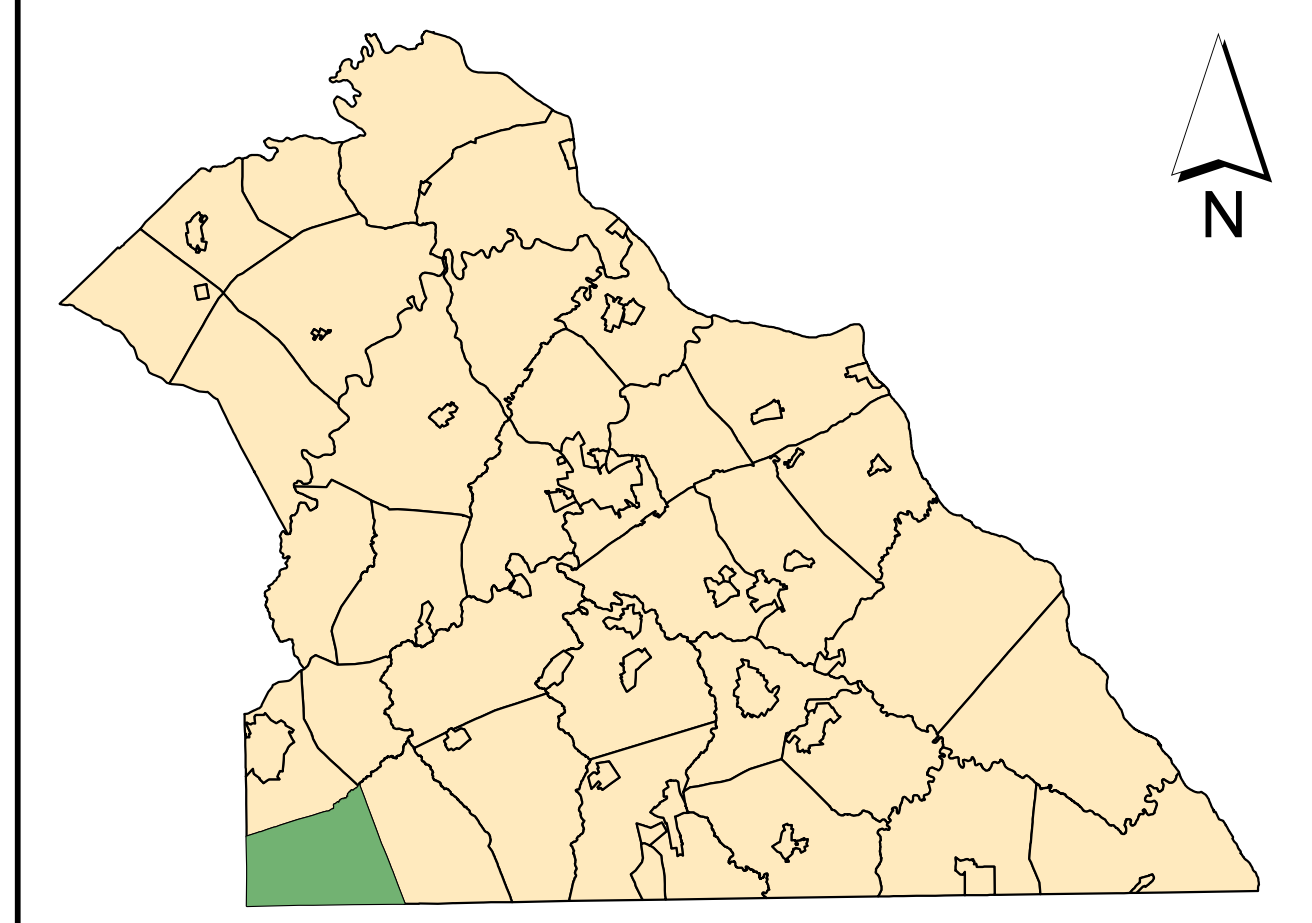
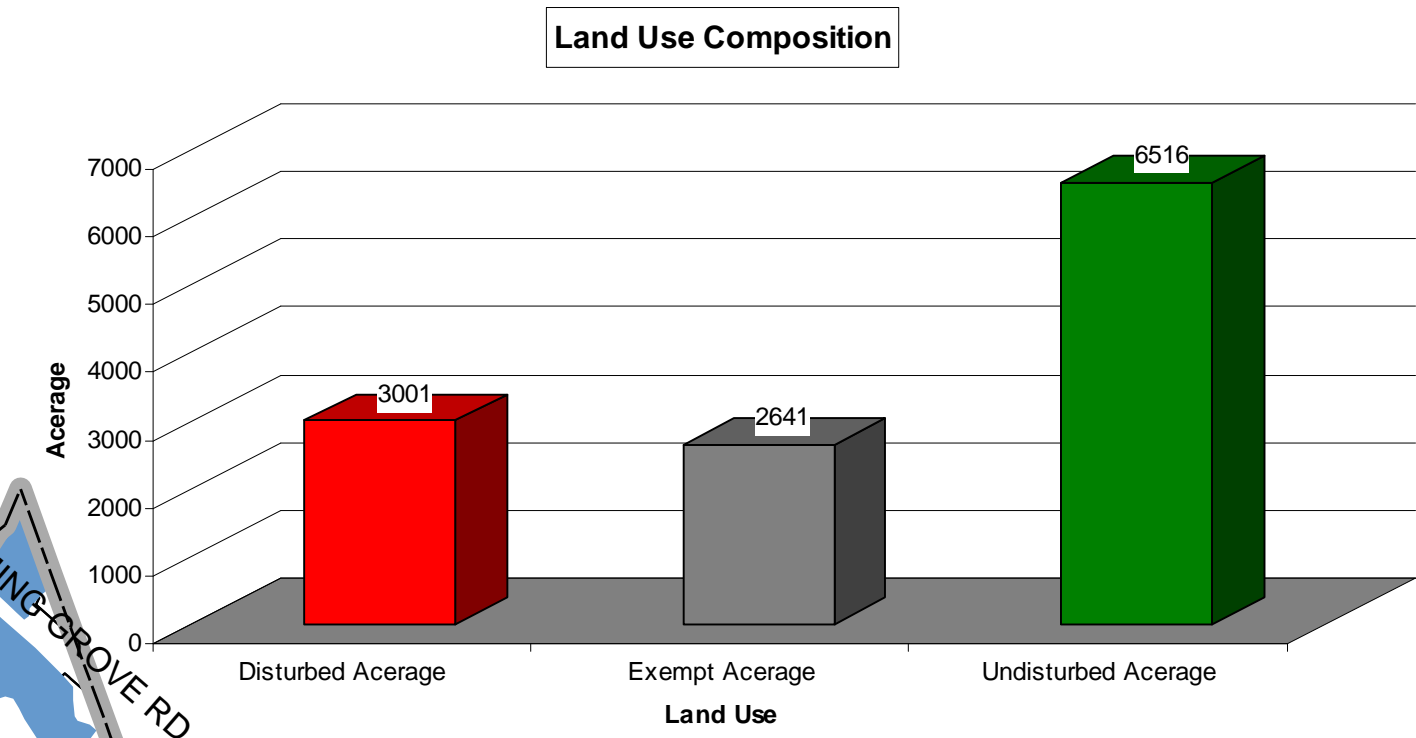
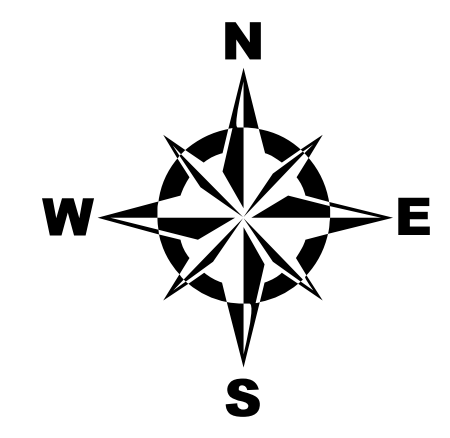
Active or Planned Residential Subdivisions (as of 1/1/2009)

Name:	Status:
1 Rogen Farms	Active
2 Lutheran Social Services	Active
3 South Pointe	Active
4 Menlena	Active
5 Colonial Hills	Active
6 Northfields Village	Active
7 Joshua Hill	Active
8 Woodridge Hunt	Active
9 Reservoir Heights	Active
10 Orchard Estates	Active
11 Preserve at Codorus Creek	Active
12 Oakwood	Active
13 Homestead Acres	Active
14 Werner Farm	Active
15 Margie & Chester Utz	Active
16 Wyndsong Pointe	Active
17 Marburg Pointe	Active
18 Charles Bowman	Active
19 Steeple Chase	Active
20 Paradise Acres	Active
21 Fuhrman Mill Heights	Active
22 Fox Run Village	Active
23 Chestnut Hill	Planned

Active or Planned Non-Residential Land Developments (as of 1/1/2009)

Name:	Status:
A. Wal-Mart Site	Active
B. West Manheim Elementary School	Active
C. West Manheim Township Building	Active
D. Northfields Village Commercial Area	Active

Existing Land Use Acreage:	
Exempt	2641
Farmland/Woodland/Open Space	6516
Residential	2855
Apartments	44
Commercial	86
Industrial	5
Utility	11



Location Map

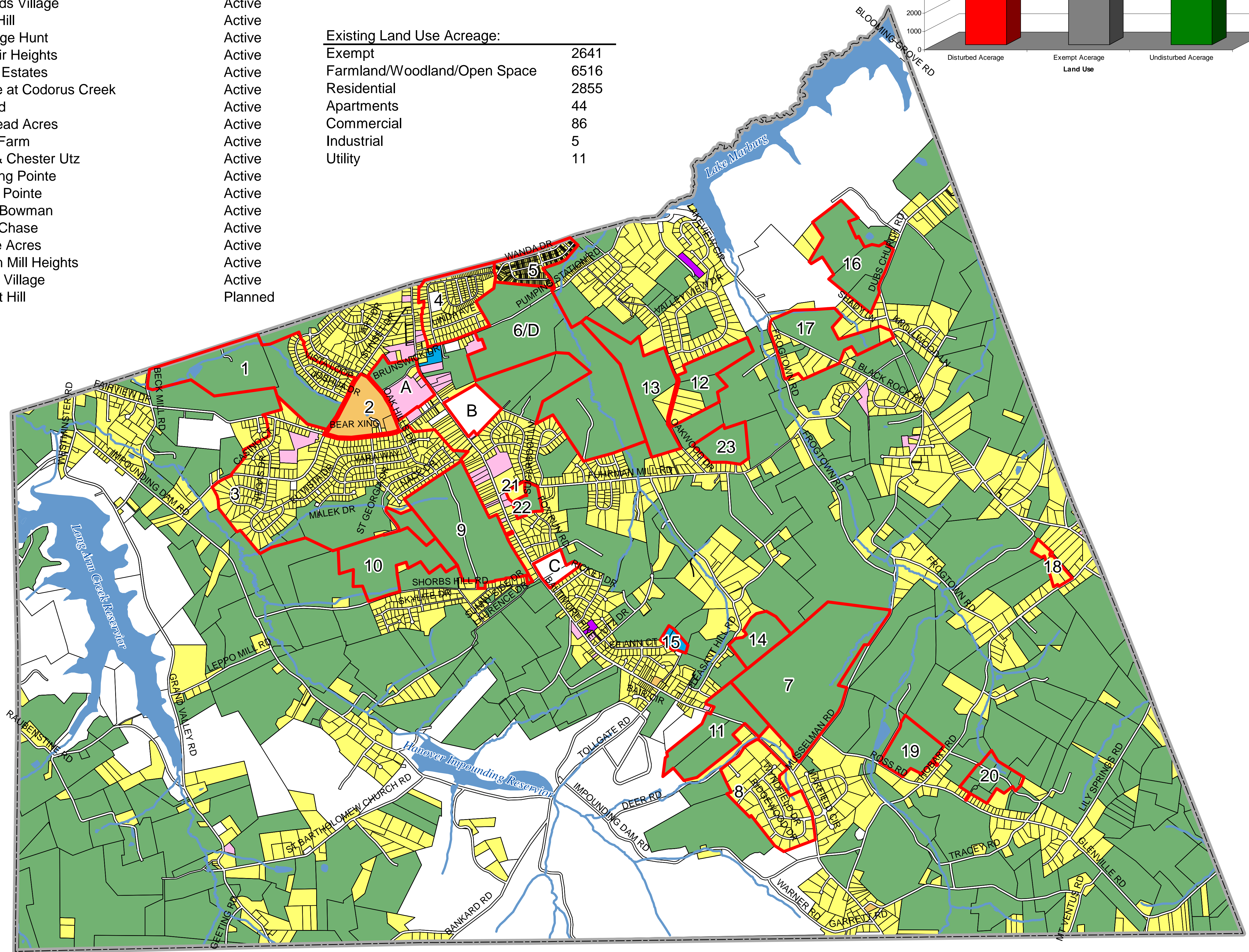
West Manheim Township York County, Pennsylvania

Map 1 Existing Land Use/ Active or Planned Subdivisions



Legend

- Residential Subdivisions
- Township Boundary
- Streams
- Hydrology
- Parcels
- West Manheim Land Use**
- Exempt
- Farmland/ Woodland/Open Space
- Residential
- Apartments
- Commercial
- Industrial
- Utility



Base Mapping & Data: York County Planning Commission